

# Hill Art Foundation

*The Writing's on the Wall: Language and Silence in the Visual Arts*

Curated by Hilton Als

December 12, 2024–March 29, 2025

Hill Art Foundation

## 3rd Floor



Irving Penn  
*Oliver Smith with  
Jane and Paul  
Bowles, New York,  
1947*

Gelatin-silver print  
9 <sup>5</sup>/<sub>8</sub> × 7 <sup>5</sup>/<sub>8</sub> inches  
(24.4 × 17.8 cm)  
Edition of 28



Christopher Knowles  
*Untitled (Dance)*, n.d.  
Typing on paper  
10 × 8 <sup>1</sup>/<sub>2</sub> inches  
(25.4 × 21.6 cm)



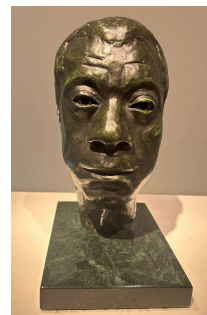
Christopher Knowles  
*Untitled (Chilly Billy)*,  
n.d.  
Typing on paper  
11 × 8 <sup>1</sup>/<sub>2</sub> inches  
(27.9 × 21.6 cm)



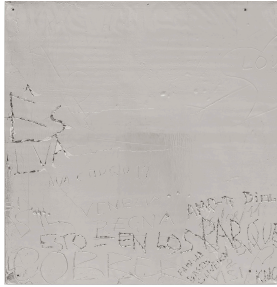
Agnes Martin  
*Untitled*, 1979  
11 × 11 inches  
Watercolor and ink  
on paper



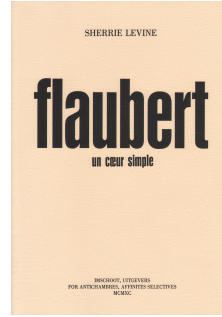
Vija Celmins  
*Blackboard Tableau  
#8 (Edward)*, 2012  
Acrylic, alkyd and  
pastel on found and  
made tablets and  
wood shelf



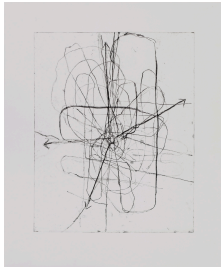
Larry Wolhandler  
*Bust of James  
Baldwin*, 1975  
Bronze  
12 <sup>5</sup>/<sub>8</sub> × 6 <sup>1</sup>/<sub>2</sub> × 9 <sup>3</sup>/<sub>4</sub>  
inches  
(32.1 × 16.5 × 24.8  
cm)



Rudolf Stingel  
*Untitled*, 2016  
Electroformed  
copper, plated nickel,  
stainless steel frame  
47 ¼ × 46 ¾ × 1 ½  
inches  
(120 × 117.8 × 3.8  
cm)



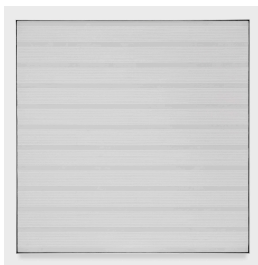
Sherrie Levine  
*Flaubert: un cœur  
simple*, 1991  
Artist's book (offset  
printed; sewn bound)  
8 ¼ × 6 inches (21 ×  
15 cm)  
Edition 34 of 50



Christopher Wool  
*Untitled*, 2016  
Softground etching  
on Strathmore Bristol  
3ply plate finish  
paper  
26 ½ × 22 inches  
(67.3 × 55.9 cm)



Rachel Harrison  
*Hermes 3000*, 2021  
Wood, polystyrene,  
cardboard, chicken  
wire, cement, acrylic,  
Paillard-Bolex  
Hermes 3000  
typewriter  
81 ¾ × 48 ½ × 34  
inches  
(207.6 × 123.2 × 86.4  
cm)



Agnes Martin  
*Untitled #20*, 1988  
Acrylic and pencil on  
canvas  
72 × 72 inches  
(182.9 × 182.9 cm)



Cy Twombly  
*Untitled*, 1970  
Oil and oil stick on  
canvas  
61 ⅞ × 74 ¾ × 2  
inches  
(155.3 × 189.9 × 5.1  
cm)



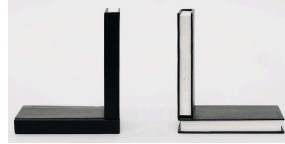
Vija Celmins  
*Pink Pearl Eraser*,  
1966–67  
Acrylic on balsa  
wood  
6 ¾ × 19 ½ × 3 ¼  
inches  
(17.1 × 49.5 × 8.3  
cm)



Claes Oldenburg  
*Notebook Page:  
Study for a Colossal  
Structure in the form  
of a Typewriter Eraser  
"Medusa,"* 1970  
Ballpoint pen,  
crayon, pencil  
11 × 8 ½ inches  
(27.9 × 21.6 cm)



Jennie C. Jones  
*Fluid Red Tone (in the break)*, 2022  
 Architectural felt, acoustic panel, and acrylic on canvas  
 48 × 36 ½ × 2 ¾ inches  
 (121.9 × 92.7 × 6.9 cm)



Steve Wolfe  
*Untitled (Bookends)*, 1990  
 Bronze, lacquer  
 7 ⅛ × 4 ¼ × 6 ¼ inches  
 (18.1 × 10.8 × 15.9 cm)  
 Edition 1 of 3



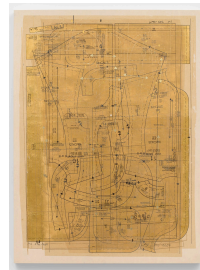
Ronny Quevedo  
*puntero*, 2018  
 Wax on paper  
 9 ¾ × 13 ¼ inches  
 (24.8 × 33.7 cm)



David Salle  
*Untitled*, 2008  
 Oil on lithograph on paper  
 22 ¼ × 30 inches  
 (56.5 × 76.2 cm)



David Salle  
*Untitled*, 2008  
 Oil on lithograph on paper  
 30 × 22 ½ inches  
 (76.2 × 57.2 cm)



Ronny Quevedo  
*body and soul (Reflection Eternal)*, 2022  
 Pattern paper, gold leaf, and metal leaf on muslin  
 48 × 36 × 1 ⅞ inches  
 (121.9 × 91.4 × 4.8 cm)



Christian Marclay and Steve Wolfe  
*La Voix Humaine*, 1991  
 Wood console, oil and screenprint on aluminum  
 46 ¼ × 31 ⅝ × 17 ⅞ inches  
 (117.5 × 80.3 × 43.5 cm)



*Ebony Magazine*, October 1963  
 Stapled paper  
 13 ¼ × 10 ¼ inches  
 (33.7 × 26 cm)



Ellen Gallagher  
*DeLuxe*, 2004–2005

Grid of 60 photogravure, etching, aquatint and drypoints with lithography, screenprint, embossing, tattoo-machine engraving; some with additions of plasticine, watercolor, pomade and toy eyeballs

Each: 15  $\frac{1}{8}$  × 12  $\frac{1}{8}$  inches

(38.9 × 32.5 cm)

Overall: 84  $\frac{3}{8}$  × 178  $\frac{1}{8}$  inches

(214.9 × 452.7 cm)

Edition 10 of 20



Willem de Kooning  
*Reclining Woman*,  
1951

Pencil and ink on  
paper

8  $\frac{3}{4}$  × 11  $\frac{3}{4}$  inches

(22.2 × 29.8 cm)



Ray Johnson

*Ice*, circa 1972

Collage on cardboard  
panel

20  $\frac{1}{4}$  × 17 inches

(51.4 × 43.2 cm)



Ina Archer  
*BBMAMS: Topsy  
Turvy*, 2024

Acrylic paint and  
collage on paper

12 × 9 inches

(30.5 × 22.9 cm)



Ina Archer

*BBMAMS: Minstrels  
(Collage)*, 2024

Acrylic paint and  
collage on paper

12 × 9 inches

(30.5 × 22.9 cm)



Sarah Charlesworth  
*Book*, 2002

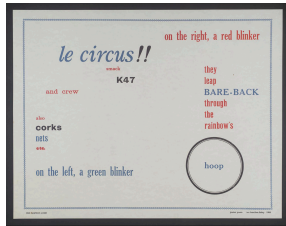
Fujiflex Crystal  
Archive print with  
lacquered wood  
frame

22  $\frac{5}{8}$  × 28  $\frac{1}{8}$  ×  $\frac{3}{4}$   
inches

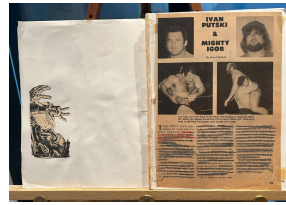
(57.5 × 71.4 × 1.9  
cm)

Edition 2 of 8, 2AP

4th Floor



Ian Hamilton Finlay  
*Poster/Poem (Le Circus)*, 1964  
 Silkscreen  
 17  $\frac{3}{8}$  × 22  $\frac{3}{8}$  inches  
 (44.2 × 56.8 cm)  
 Edition of 250



Jared Buckhiester  
*"collaged reference diary,"* 2011–present  
 Paper, glue, tape  
 11 × 17  $\frac{1}{2}$  inches  
 (27.9 × 44.5 cm)



Brice Marden  
*Letter Drawing I*, 2011  
 Kremer ink, Kremer white shellac, and graphite on Rives BFK paper  
 11 × 14  $\frac{7}{8}$  inches (28 × 38 cm)



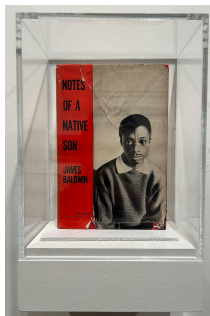
Cy Twombly  
*Untitled*, 1959  
 Oil paint, wax crayon, and lead pencil on canvas  
 38  $\frac{3}{8}$  × 55  $\frac{3}{4}$  inches  
 (97.5 × 141.6 cm)



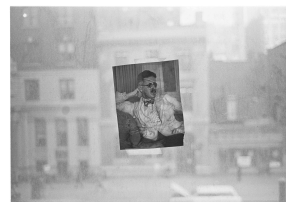
Kevin Beasley  
*Mophead*, 2017  
 Polyurethane resin, polyurethane foam, mop head  
 16 × 15  $\frac{1}{2}$  × 8 inches  
 (40.6 × 39.4 × 20.3 cm)



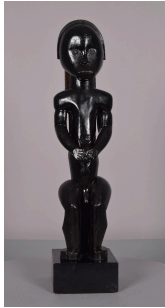
Umar Rashid  
*Nexus of a cosmic crisis at the astrophysical location of the Swerve and Surf (plates 1–12)*, 2024  
 Acrylic, ink, and colored pencil on paper, mounted to panel with pumice gel  
 44  $\frac{3}{8}$  × 42  $\frac{1}{2}$  × 1  $\frac{1}{2}$  inches  
 (112.7 × 108 × 3.8 cm)



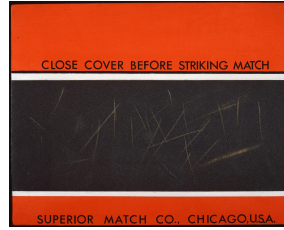
James Baldwin  
*Notes of a Native Son*, 1955  
 Hardcover bound book  
 8 × 5 ×  $\frac{3}{4}$  inches  
 (20.3 × 12.7 × 1.9 cm)  
 First Edition



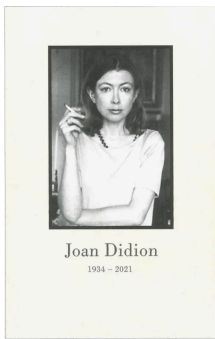
Judy Linn  
*James Joyce on 23rd st.,* early 1970s  
 Archival pigment print  
 26  $\frac{1}{2}$  × 35  $\frac{1}{2}$  inches  
 (67.3 × 88.9 cm)



Unrecorded  
Betsi-Nzaman artist,  
Fang peoples  
*Male Reliquary  
Guardian Figure  
(Eyema Byeri)*, 19th  
Century  
Wood, metal,  
pigment  
20.5 × 4 ½ × 4 ½  
inches (52.1 × 11.4 ×  
11.4 cm)



Andy Warhol  
*Close Cover Before  
Striking*, 1962  
Acrylic and collage  
on linen  
16 × 20 inches  
(40.6 × 50.8 cm)



*Joan Didion*, 2022  
Ink on paper  
8 ½ × 5 ½ inches  
(21.6 × 14 cm)



Medardo Rosso  
*Rieuse*, 1890  
Wax on plaster  
12 ¾ × 9 ¾ × 11 ¾  
inches  
(32.4 × 24.8 × 29.8  
cm)



Christopher Wool  
*Untitled*, 1992  
Enamel and graphite  
on paper  
33 ⅛ × 22 ¾ inches  
(84 × 57 cm)



Christopher Wool  
*Untitled*, 1990  
Enamel on paper  
32 ½ × 22 inches  
(82.6 × 55.9 cm)



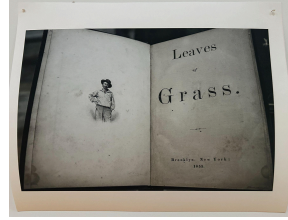
Ina Archer  
*Black Black  
Moonlight: A Minstrel  
Show*, 2024  
3-channel video  
installation  
17 minutes 30  
seconds  
dimensions variable



Ina Archer  
*BBMAMS: Minstrels  
(Painting/Collage)*,  
2024  
Acrylic paint and  
collage on paper  
12 × 9 inches  
(30.5 × 22.9 cm)



Christian Marclay  
*Light Blue Door (The Electric Chair)*, 2006  
Silkscreen ink on paper  
100 ½ × 51 ½ × 2 ½ inches  
(255.3 × 130.8 × 6.4 cm)



Judy Linn  
*Leaves of Grass. title page public library*, 2016  
Archival pigment print  
Overall: 13 × 16 ½ inches  
(33 × 41.9 cm)  
Edition 1 of 3

### Permanently Installed



Robert Gober  
*Drains*, 1990  
Cast pewter  
3 ¾ × 3 ¾ × 1 ⅝ inches  
(9.5 × 9.5 × 4.1 cm)



Sarah Crowner  
*Wall Fragment (Stretched Pentagons)*, 2024  
Glazed terracotta tiles, wood, mortar, grout  
101 × 36 × 1 ½ inches  
(256.5 × 91.4 × 3.81 cm)



Christopher Wool  
*Untitled*, 2013  
Bronze and copper plated steel  
161 ⅜ × 113 ¾ × 49 ⅝ inches  
(409.9 × 288.9 × 126.1 cm)