

# Hill Art Foundation

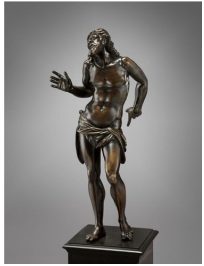
## The Human Body

Curated by Karel Schampers

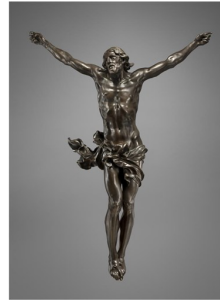
September 9–November 20, 2021

*This checklist is organized clockwise by room, starting on the third floor.*

### Third Floor



1. **Hans Reichle**  
*Christ at the Column*, cast  
circa 1610  
Bronze  
16 x 4 1/2 x 4 1/2 inches  
(40.6 x 11.4 x 11.4 cm)



5. **Alessandro Algardi**  
*Corpus Christi*, circa  
1646  
Bronze  
31 1/8 x 20 5/8 x 1  
1/4 inches  
(79.1 x 52.4 x 3.2 cm)



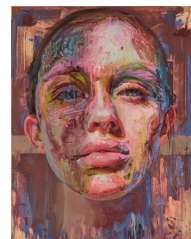
2. **Antonio Susini**  
*Cristo morto (Dead Christ)*,  
cast circa 1590–1615  
Gilt bronze  
12 1/2 x 10 3/4 x 3 inches  
(31.6 x 27.3 x 7.6 cm)



6. **Francis Bacon**  
*Lying Figure*, 1959  
Oil on canvas  
78 x 56 inches  
(198.1 x 142.2 cm)



3. **Alessandro Algardi**  
*Christ at the Column*, circa  
1630s  
Bronze  
11 1/2 x 4 x 4 inches  
(29.2 x 10.2 x 10.2 cm)



7. **Jenny Saville**  
*Meridian*, 2019–20  
Oil on canvas  
59 1/16 x 47 1/4  
inches (150 x 120  
cm)



4. **Gian Lorenzo Bernini**  
*Cristo Morto*, cast before  
March 10, 1656  
Bronze  
31 1/8 x 20 5/8 x 1 1/4  
inches (79 x 52.4 x 3.2 cm)



8. **Richard Prince**  
*High Times*, 2017  
Ink jet, acrylic,  
collage, and oil stick  
on canvas  
74 3/8 x 54 7/8  
inches  
(188.9 x 139.4 cm)



9. **Ron Mueck**  
*Mask*, 1997  
 Polyester resin and mixed media  
 62 1/4 x 60 1/4 x 48 3/4 inches (158.1 x 153 x 123.8 cm)



13. **Frank Auerbach**  
*Head of Julia*, 1985  
 Oil on canvas  
 26 1/8 x 26 1/8 inches (66.4 x 66.4 cm)



10. **Robert Bergman**  
 Untitled, 1990  
 Inkjet print  
 23 3/4 x 16 inches (60.3 x 40.6 cm)



14. **Anthony van Dyck**  
*Study of a Bearded Man*, 1618  
 Oil on panel  
 11 5/8 x 8 7/8 inches (29.5 x 22.5 cm)



11. **Robert Bergman**  
 Untitled, 1989  
 Inkjet print  
 23 3/4 x 16 inches (60.3 x 40.6 cm)



15. **Rudolf Stingel**  
*Untitled (After Sam)*, 2007  
 Oil on canvas  
 15 x 20 1/2 inches (38.1 x 52.1 cm)



12. **Robert Bergman**  
 Untitled, 1989  
 Inkjet print  
 23 3/4 x 16 inches (60.3 x 40.6 cm)



16. **Rudolf Stingel**  
*Untitled (After Sam 5)*, 2006  
 Oil on canvas  
 15 x 20 1/2 inches (38.1 x 52.1 cm)

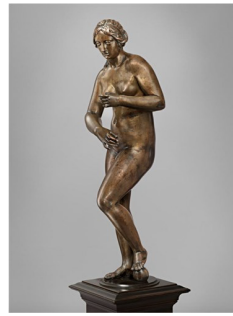


17. **Jordan Casteel**  
*Harold*, 2017  
 Oil on canvas  
 78 x 60 inches (198.1 x 154.4 cm)

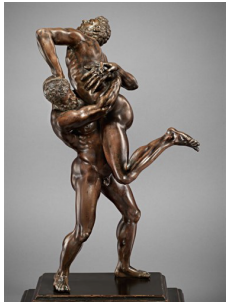
## Fourth Floor



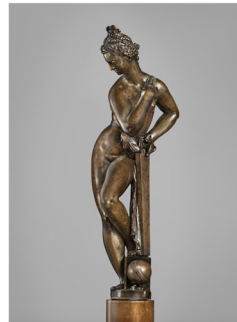
18. **Giuseppe Piamontini**  
*Hercules & Iolaus Slaying the Hydra*, cast circa 1700–20  
Bronze  
17 x 19 1/2 x 11 inches  
(43.2 x 24.1 x 27.9 cm)



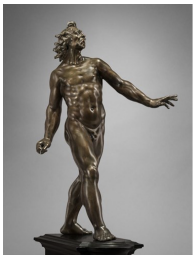
22. **Hubert Le Sueur**  
*Venus*, cast 1641–60  
Bronze  
25 1/2 x 6 1/2 inches  
(64.8 x 16.5 cm)



19. **Giovanni Francesco Susini**  
*Hercules & Antaeus*, cast circa 1625–50  
Bronze  
19 x 10 1/2 x 8 inches (48.3 x 26.7 x 20.3 cm)



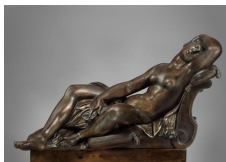
23. **Giambologna**  
*Astronomy*, cast early 1570s  
Bronze  
20 x 5 inches  
(50.8 x 12.7 cm)



20. **Willem Danielsz van Tetrode**  
*Mars Gradivus*, cast circa late 1560s  
Bronze  
20 x 9 x 10 inches  
(50.8 x 22.9 x 25.4 cm)



24. **Robert Gober**  
*Plunger/Cherries*, 2001–17  
Terra-cotta, acrylic paint on fabric  
14 15/16 x 13 3/8 x 4 5/16 inches  
(38 x 34 x 11 cm)



21. **Antonio Susini**  
*Sleeping Venus*, cast circa 1600–15  
Bronze  
11 x 12 inches  
(27.9 x 30.5 cm)



25. **Andy Warhol**  
*Self-Portrait*, 1964  
Synthetic polymer and silkscreen ink on canvas  
20 x 16 inches  
(50.8 x 40.6 cm)



26. **Andy Warhol**  
*Double Marilyn*, 1962  
 Synthetic polymer and  
 graphite on canvas  
 19 x 24 1/2 inches  
 (48.3 x 62.2 cm)

© 2021 The Andy Warhol Foundation for the  
 Visual Arts, Inc. / Licensed by Artists Rights  
 Society (ARS), New York Marilyn Monroe™;  
 Rights of Publicity and Persona Rights: The Estate  
 of Marilyn Monroe LLC. marilynmonroe.com



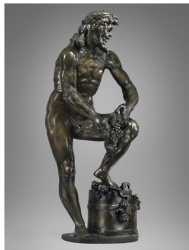
29. **Giuseppe  
 Piamontini**  
*Milo of Croton*, cast  
 circa 1725–30  
 Bronze  
 20 x 7 inches  
 (50.8 x 17.8 cm)



27. **Willem Danielsz van  
 Tetrode**  
*Samson and the Philistine*,  
 probably modeled in  
 Florence in 1562  
 Bronze  
 18 x 10 inches  
 (45.7 x 25.4 cm)



30. **Peter Paul Rubens**  
*Commander Being  
 Dressed for Battle*,  
 circa 1610–14  
 Oil on panel  
 48 1/4 x 38 3/8  
 inches  
 (122.6 x 97.5 cm)

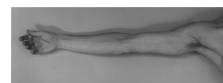


28. **Adriaen de Vries**  
*Bacchus Wearing a  
 Silenus Mask*, cast circa  
 1578–80  
 Bronze  
 35 1/4 x 13 inches  
 (89.5 x 33 cm)



31. **Andy Warhol**  
*Mao*, 1973  
 Acrylic and  
 synthetic polymer  
 silkscreened on  
 linen  
 50 x 42 inches  
 (127 x 106.7 cm)

© 2021 The Andy Warhol Foundation  
 for the Visual Arts, Inc. / Licensed by  
 Artists Rights Society (ARS), New  
 York



32. **Robert  
 Mapplethorpe**  
*Arm*, 1976, printed  
 2005  
 Gelatin silver print  
 16 x 20 inches  
 (40.6 x 50.8 cm)



**Permanently Installed**



**Robert Gober**

*Drains*, 1990

Cast pewter

3 3/4 x 3 3/4 x 1 5/8 inches

(9.5 x 9.5 x 4.1 cm)



**Christopher Wool**

*Untitled*, 2013

Bronze and copper  
plated steel

161 3/8 x 113 3/4 x

49 5/8 inches

(409.89 x 288.93 x

126.05 cm)